



# Writing and Communication Tutoring: Data for the Future

Tabatha SimpsonFarrow

# TOC

Background

The Shift

The Software

The Data

The Plan

The Purpose

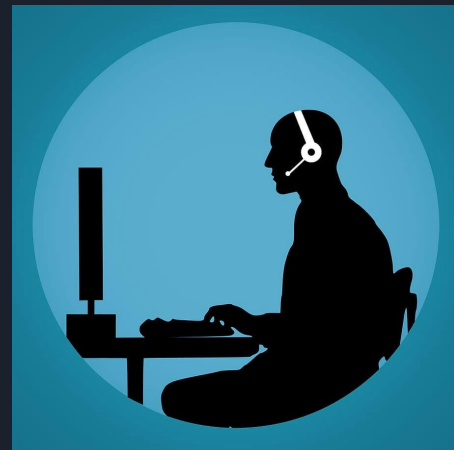
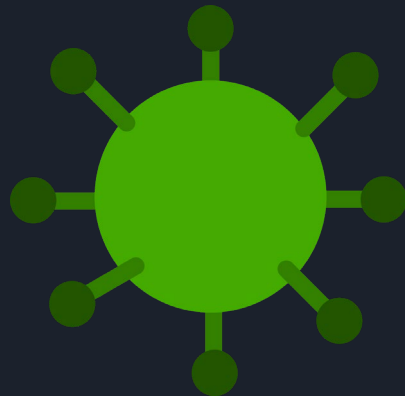
The Writing Center

Tabatha Simpson-Farrow; Director

The Communication  
Center

Matt Robins; Director

# Background



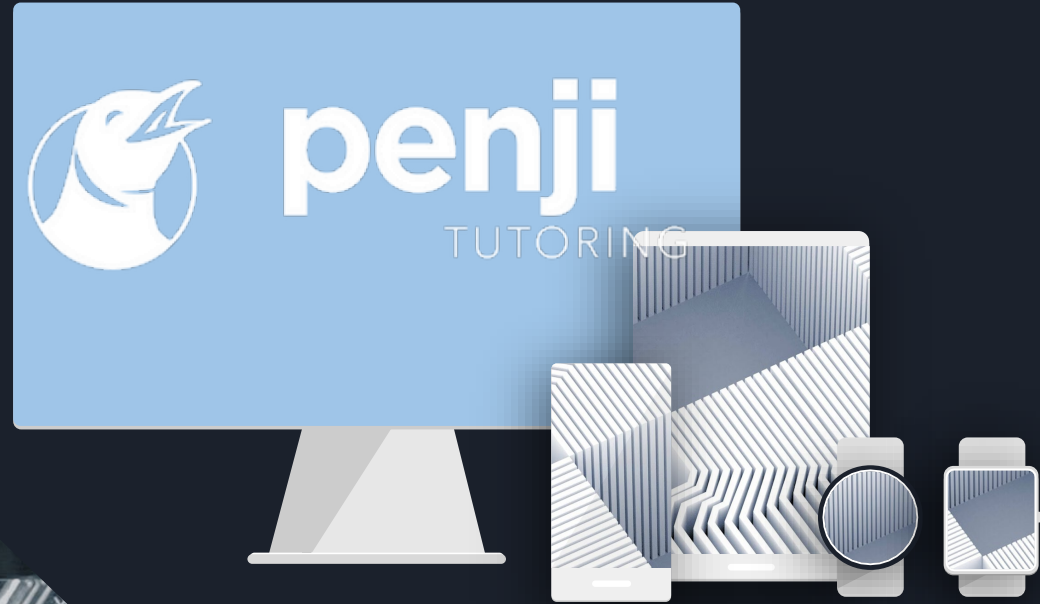


# Shift to Online Learning: What we Lost

- 01 Physical Atmosphere: Writing and Communication can be deeply personal. Effectively tutoring these skills requires the student to comfortable in the space.
- 02 Body Language: Tutors are trained to respond to nonverbal reactions from students and make adjustments to the session as necessary.
- 03 A host of tools and methods: Many of the techniques used in WCs & CCs rely on physical placement of the student and their work, sharing materials and guides that have not been digitized, etc.



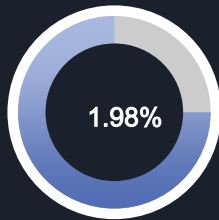
# The Software that Saved Us



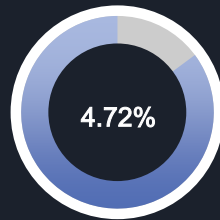
Persona 02

# The Data

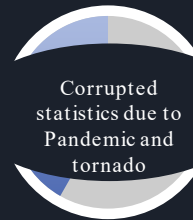
Lorem ipsum dolor sit amet, consectetur adipiscing elit. Curabitur eleifend a diam quis suscipit. Fusce venenatis nunc ut lectus convallis, sit amet egestas mi rutrum. Maecenas molestie ultricies euismod.



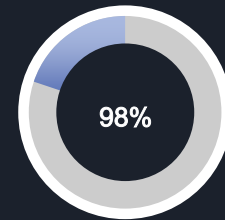
National Average  
2019



A-State  
2018/2019



2019/2020



Fall 2020 - Spring  
2021



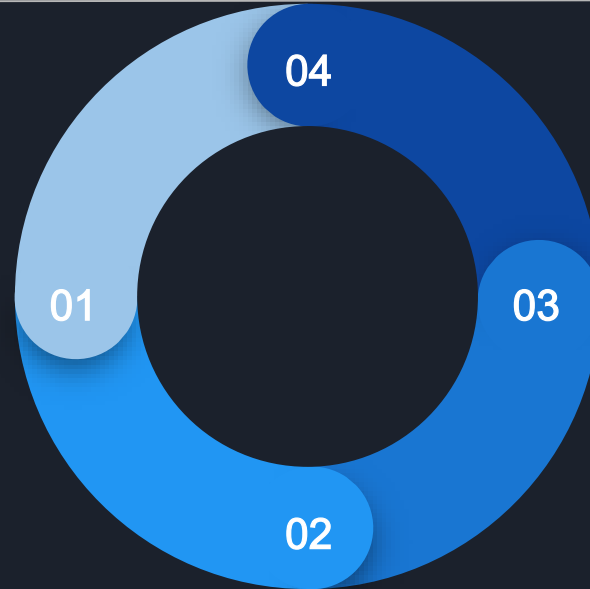
# The Plan

## Co-curricular Cohort

Consistent app usage allows us to stay in step with other centers and contribute to clean data collection.

## Consistent

A common app facilitates student access to support services.



## Results

Another year of Penji data can help us assess services offered and the training we implement to be more effective for student success.

## Frequency

Students are more likely to repeatedly use resources that are clearly and readily accessible.



## Conclusion: The Purpose

The awarded PAC grant will fund another year of Penji subscription for both the Writing and Communication Centers.



Data collected through Penji will be used for more assessment of our individual efforts as well as our impact with the tutoring cohort.